

# DOWNLOAD INSTRUCTIONS

## Greatpig Mod 1.0

Minecraft version:1.7.10

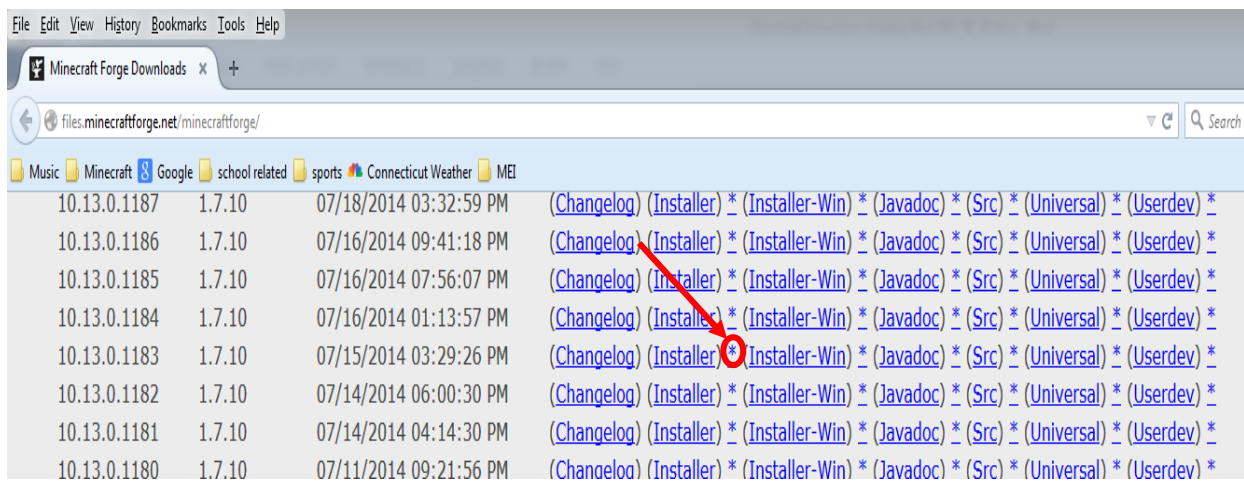
Forge version: 1.7.10-10.13.0.1180

Step 1 download forge (skip this step if you have forge 1.7.10-10.13.0.1180)

Download forge 1.7.10-10.13.0.1180 from <http://files.minecraftforge.net/minecraftforge/>

First: look for version 10.13.0.1180 in the 1.7.10 section

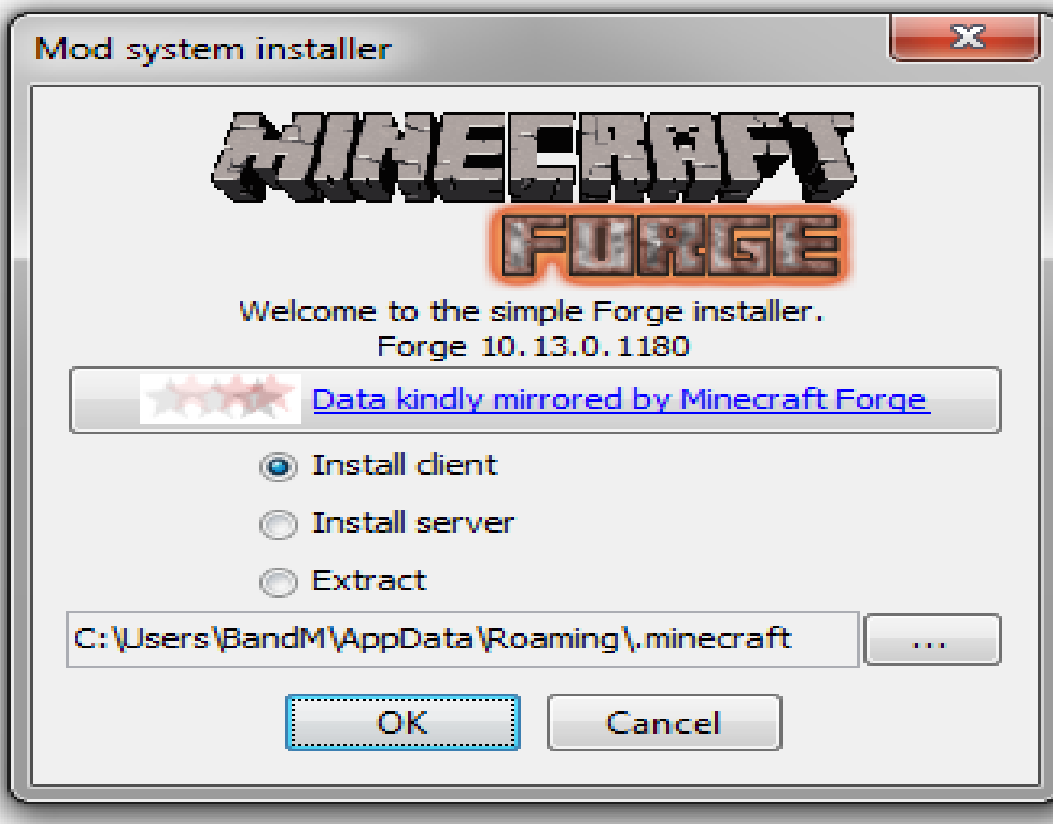
Second: click the \* directly right from (Installer)



Third: accept the download and go to your downloads folder

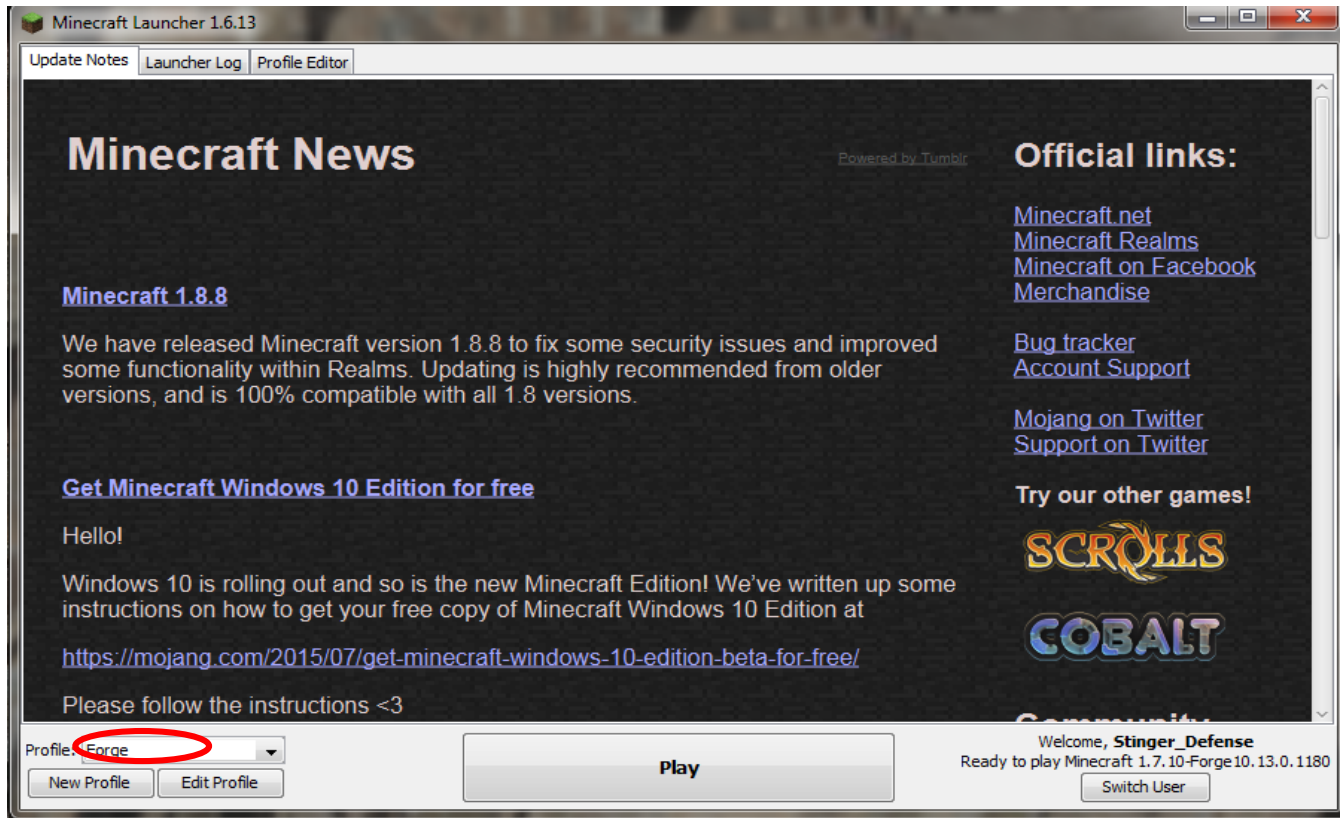
Step 2 install forge in Minecraft client (skip this step if you have forge 1.7.10-10.13.0.1180 installed on your client)

First: click the file, forge-1.7.10-10.13.0.1180-installer.jar and you will see this popup

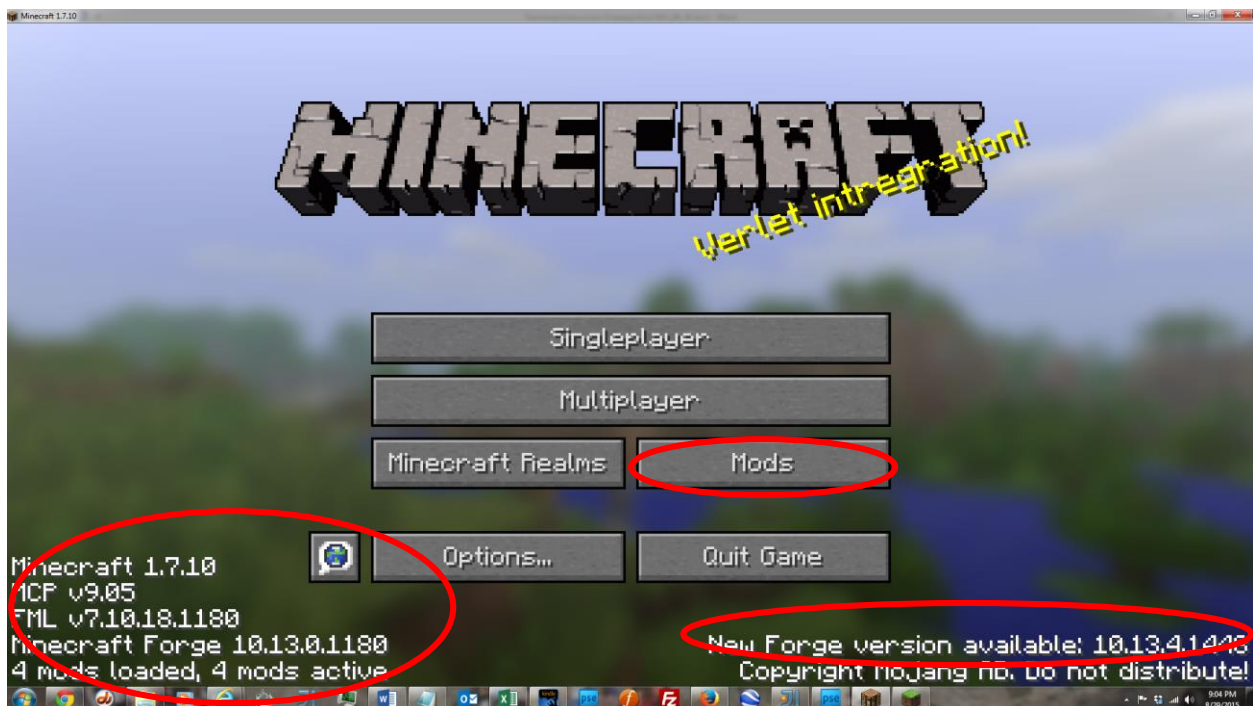


Second: Make sure "Install client" is selected, then click OK. **Very Important!!!**

Third: it will automatically create a bunch of folders for you. To check if you are successful, you should run Minecraft and you should see a new "Forge" profile:

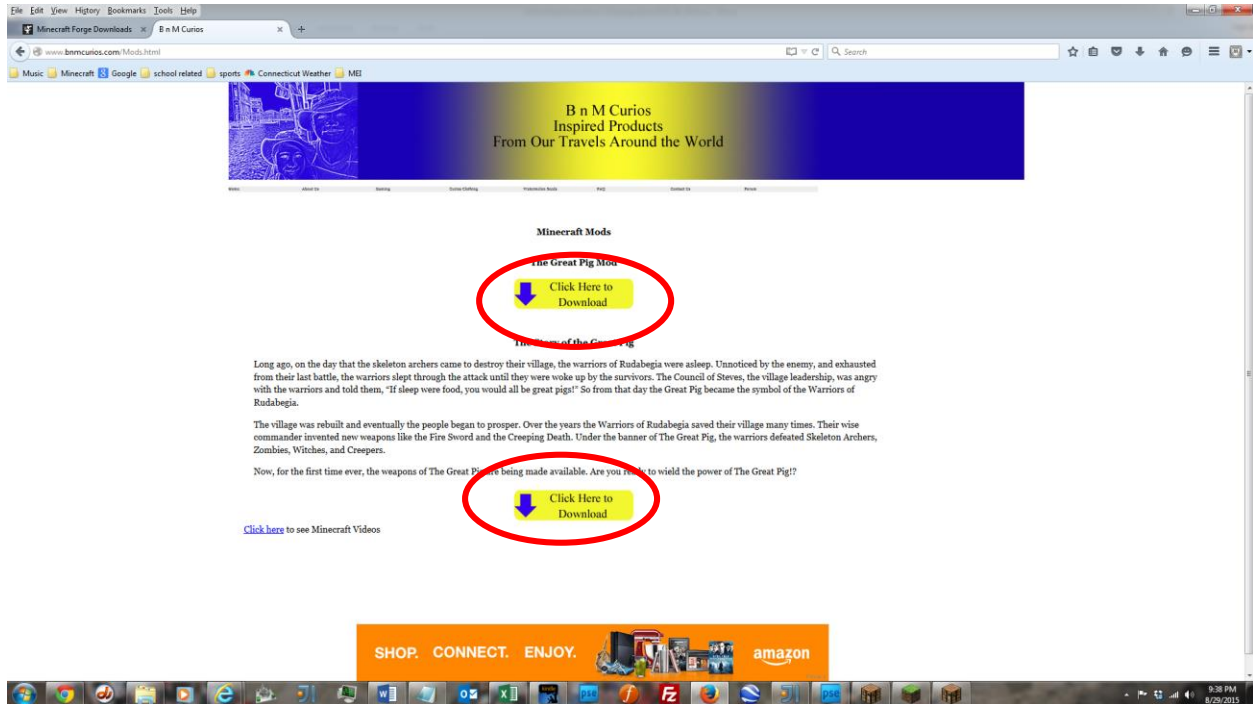


Third: click play and you should see this (it takes 1 minute on the first click it gets longer when you have more things Minecraft needs to load):

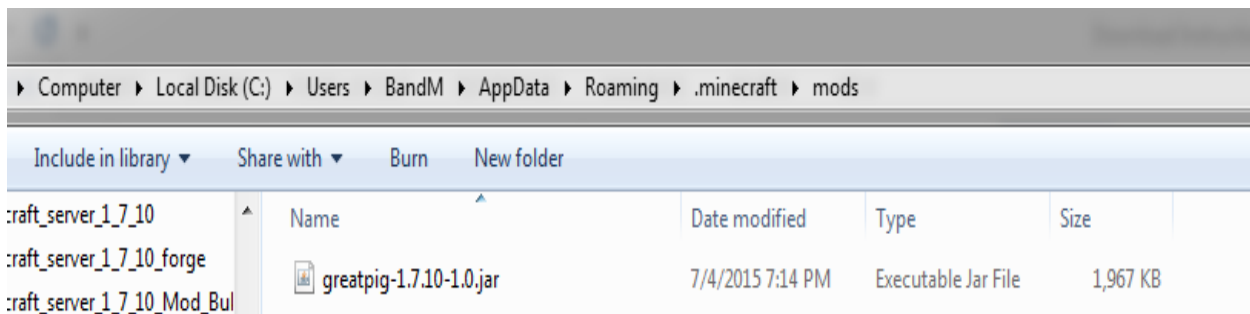


### Step 3 downloading the Greatpig mod

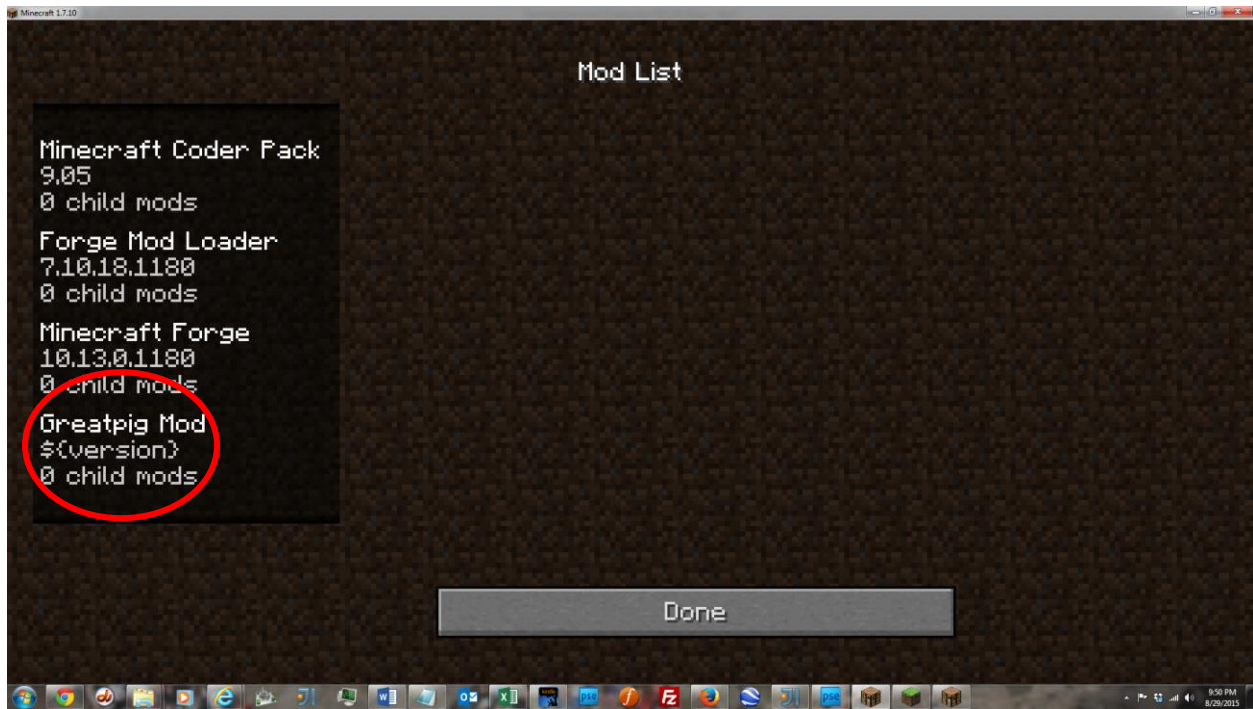
First: after you have downloaded forge, you should download the Greatpig mod here (note: you do not need to download twice):



Second: go into your downloads folder and copy (Ctrl+c) and paste (Ctrl+v) into your mods folder in C:\Users\{Username}\Appdata\Roaming\Minecraft\Mods. It should look like this:



Third: now run Minecraft and if you click Mods you should see this:



Fourth: if you see this you have successfully installed the Greatpig mod so have a good time exploring the Blocks and items of the Greatpig.